



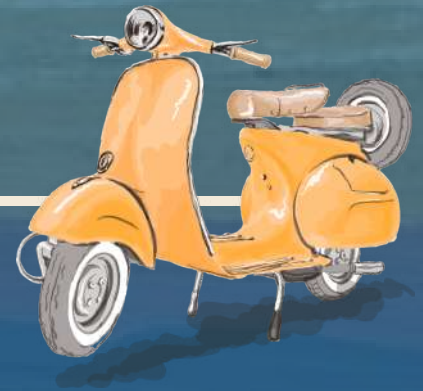
Self-Guided

Follow the lead of Italy's great explorers -
hit the road and discover the region's
offerings at leisure.



*Our Experiences Team can assist with booking wine tastings,
farm visits, and lunches to help craft your itinerary.*

DRIVING TIMES



TO NEARBY TOWNS - TUSCANY & UMBRIA

<i>Montepulciano</i>	—————>	<i>10 minutes</i>
<i>Castiglione del Lago</i>	—————>	<i>20 minutes</i>
<i>Pienza</i>	—————>	<i>25 minutes</i>
<i>Cortona</i>	—————>	<i>25 minutes</i>
<i>Orvieto</i>	—————>	<i>45 minutes</i>
<i>Arezzo</i>	—————>	<i>45 minutes</i>
<i>Montalcino</i>	—————>	<i>45 minutes</i>
<i>Siena</i>	—————>	<i>50 minutes</i>
<i>Assisi</i>	—————>	<i>1 hour</i>
<i>Florence</i>	—————>	<i>1 hr. 20 min.</i>
<i>Greve in Chianti</i>	—————>	<i>1 hr. 25 min.</i>
<i>San Gimignano</i>	—————>	<i>1 hr. 30 min.</i>
<i>Volterra</i>	—————>	<i>1 hr. 40 min.</i>

DRIVING TIMES FROM NEAREST AIRPORTS

<i>Perugia (PEG)</i>	—————>	<i>45 minutes</i>
<i>Florence (FLR)</i>	—————>	<i>1 hr. 30 min.</i>
<i>Rome (FCO)</i>	—————>	<i>2 hours</i>
<i>Pisa (PSA)</i>	—————>	<i>2 hours</i>
<i>Bologna (BLQ)</i>	—————>	<i>2 hr. 15 min.</i>

NEAREST TRAIN STATION: CHIUSI-CHIANCIANO TERME